

## HYPERIKON® LED PANEL Installation Guide



*Hyperikon products maintain all of the necessary certifications:*

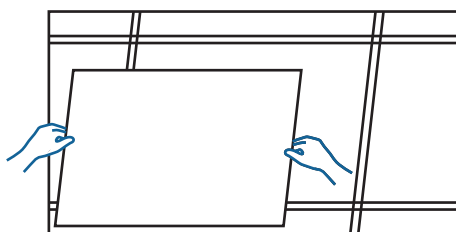


### CAUTION

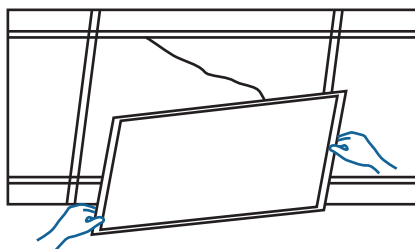
1. This LED Panel requires professional installation and maintenance
2. The power supply of the LED Panel should be powered by a dedicated external LED driver
3. Disconnect the power supply before installing or maintenance
4. Make sure the wires have been properly connected before powering on the device
5. Ensure the product has enough space for heat dissipation. Please abide to this product's fireproof regulations
6. Ensure the luminaries are never covered by any heat insulation mat or slim layer material at anytime
7. If you have any questions regarding these instructions, please consult a certificated electrician, your distributors or the manufacturer

### INSTRUCTIONS *(Recessed type installation)*

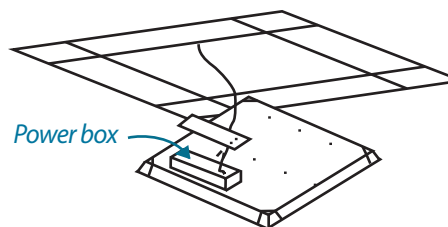
1. Remove the old fixture and have the black and white input wires ready from ceiling.



3. When power is connected to the box please lift up the panel and mount the power box in the bracket with the 2 finger screws.



2. Remove the connecting box on the top of panel by unscrewing the 2 side screws. Connect the box to power coming from ceiling and which were supplying power to the old fixture (black and white from ceiling).



4. Then mount the panel in the ceiling and switch on the power.

